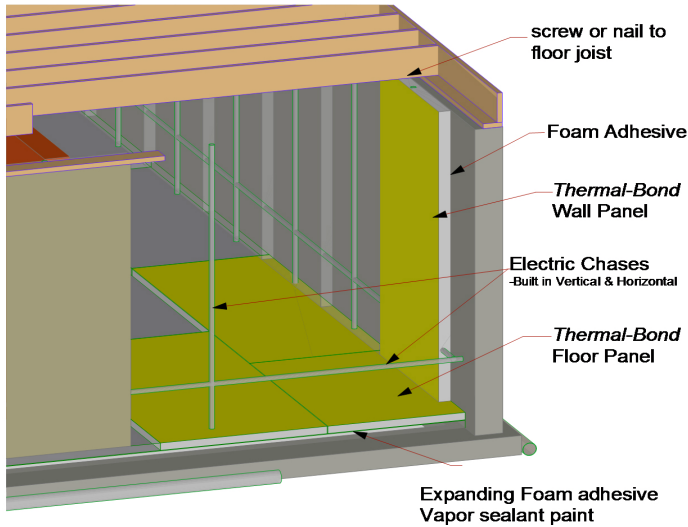


Thermal-Bond Wall and Floor components



www.SIPpsi.com



Phone: 250-714-4545

Table of Federal and Provincial Rebates for Thermal-Bond Insulating Panels

Important notes:	Rebate values taken from BC provincial information and are subject to change without notice. A rebate of \$1280 may be possible, it may not be best to try for it. To avoid disappointment count on \$1000 - \$2000 The independent EnerGuide audit creates the best solution priorities if you are looking at maximizing payback energy savings. It is best not to delay the application for rebates since changes will likely only decrease the rebate due to 'over success'. We sell and install windows too -although they are usually only a leading priority after insulation if they are single pane Our windows for renovations are installed professionally by a highly qualified specialist for renovation window installations.				
Maximum potential Thermal-Bond insulating panels	ELIGIBLE IMPROVEMENTS / RETROFITS FOR SINGLE FAMILY HOMES "PST Free" for PST exempt materials and products	<i>Look for</i>	Interior and Rural Rebate	South Coastal Rebate	Federal Rebate
\$1,280	ATTIC INSULATION - 100% coverage of component required NOTE: At this time we DO NOT offer Blown in attic. We can refer.				
n/a	Increase Attic Insulation	<= R-1 2 to R-50	\$310	\$190	\$600
n/a		<= R-12 to R-40	\$220	\$140	\$400
n/a		<= R-25 to R-50	\$110	\$70	\$300
n/a		<= R-25 to R-40	\$70	\$50	\$200
\$0	Increase Cathedral Insulation	0 by at least R-1 4	\$590	\$420	\$400
\$0		<= R-12 to R-28 Thermal Bond could have excellent application here INSIDE or OUT	\$150	\$90	\$600
\$0		<= R-35 to R-50	\$50	\$50	\$100
	EXTERIOR WALL INSULATION				
\$0	Increase Exterior Wall Insulation	Add at least R-9 for 100% of building to achieve a minimum of R-1 2	\$400	\$400	\$1,500
\$0		Add at least R-9 for 80%+ of building to achieve a minimum of R-1 2	\$230	\$230	\$1,200
\$0		Add at least R-9 for 60%+ of building to achieve a minimum of R-1 2	\$160	\$160	\$900
\$0		Add at least R-3.8 for 100% of building to achieve a minimum of R-1 2	\$140	\$140	\$900
\$0		Add at least R-3.8 for 80%+ of building to achieve a minimum of R-1 2	\$100	\$100	\$720
	BASEMENT INSULATION - Requires consideration of basement moisture levels as part of the audit				
\$0	Increase Basement Insulation (full indoor height)	Add at least R-23 for 100% of surface area	\$400	\$400	\$1,000
\$0		Add at least R-23 for 80% of surface area	\$300	\$300	\$800
\$0		Add at least R-23 for 60% of surface area	\$140	\$140	\$600
\$730		Add at least R-1 0 for 100% of surface area to achieve R-1 2	\$310	\$230	\$500
\$0		Add at least R-1 0 for 80% of surface area to achieve R-1 2	\$220	\$150	\$400
\$0	OTHER INSULATION - 100	Add at least R-1 0 for 60% of surface area to achieve R-1 2	\$170	\$120	\$300
\$0	Basement header	per cent coverage required increase by R-20	\$60	\$50	\$100
\$0	Crawl space wall (can qualify for only this rebate or floor above crawl space rebate)	increase by R-23 increase by R-10	\$520	\$320	\$800
\$0	Floor above crawl space	increase by R-24	\$100	\$100	\$400
\$0	Exposed floor	increase by R-20 (150 sq ft minimum)	\$520	\$320	\$200
\$0			\$230	\$150	\$150
WE DO WINDOWS	WINDOWS AND DOORS NOTE: Thermal-Bond only supplies and installs Energy Star one zone better or more.				
0	ENERGY STAR Windows, Doors and Skylights	Rated one ENERGY STAR zone better	\$40 each	\$30 each	\$30 each
0		For your ENERGY STAR zone	\$30 each	\$20 each	\$30 each
	AIR TIGHTNESS AND DRAFT	PROOFING⁷			
\$550	Perform air sealing of the home to achieve	Base Target + 20%	\$280	\$250	\$300
0		Base Target + 10%	\$175	\$150	\$225
0		Base Target	\$125	\$100	\$150

NOTE: Thermal-Bond panels alone do not achieve air sealing without a total review around entire home to address other leak potential areas